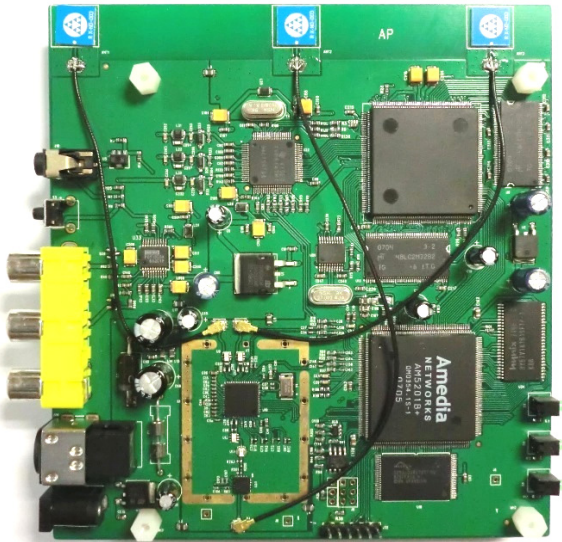
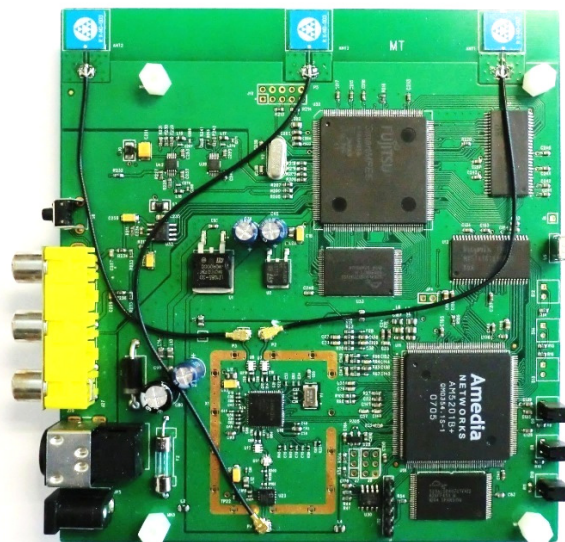


DMA3.1L Digital Media Adapter PCBA Module

Powered by Amedia's WiVi™ Technology, the DMA3.1L PCBA Module delivers video and audio wirelessly over distance while maintaining their original quality. It enables a robust wireless connection between video/audio sources (DVD, DVR, STB, camera, etc.) and a video/audio display (TV, flat panel or video monitor).



AV Sender PCBA



AV Receiver PCBA

PCBA Set Includes:

- 1 DMA3.1L A/V Sender PCBA
- 1 DMA3.1L A/V Receiver PCBA
- 1 IR extender – Optional upon request
- 2 Power adaptors (110-240V AC, 50/60Hz to 5V DC 2A) – Optional upon request

Benefits:

- Plug and play with most of the A/V devices. No hassle for software and network setting
- Certified by FCC (FCC ID: U8B-DMA3-1L) and Industry Canada (IC: 7105A-DMA31L)
- Integrated on-board antennas

Features:

- Digital wireless technology using 5GHz radio spectrum - supports 4.9 to 5.9 GHz frequency band (software controlled setting to comply with different country spectrum requirements)
- Whole home coverage with advanced antenna diversity technology - 250 feet through walls without any loss of the original video quality
- No interference from other wireless devices as a result of using 'Dynamic Frequency Selection' which automatically selects an available frequency from 23 channels in 5GHz band

- Synchronous TDMA network to guarantee QoS - truly real time and jitterless
- Supports point-to-point video connection with full QoS
- Multiple pairing technology allows one Sender to pair with multiple Receivers
- Supports point-to-multipoint A/V broadcasting
- Close-loop power control to minimize power consumption and be a friendly neighbor to other WLAN networks at 5 GHz.
- Secure network with 128-bit Advance Encryption Standard (AES)
- Built-in IR receiver to remotely control A/V source with your own remote control
- MPEG-2 standard video compression and decompression
- Auto detection of NTSC and PAL.

Specifications:

| | |
|---------------------------------|--|
| Video/Audio Input (Transmitter) | - 1x Composite - 1 x S-video - 1 x Stereo audio |
| Video/Audio Output (Receiver) | - 1x Composite - 1 x S-video - 1 x Stereo audio |
| Encoding | - MPEG-2 (MP@ML) |
| Video Resolution | - 720x480i (30fps), 720x576i (25fps) |
| Video Standard | - NTSC/PAL/SECAM |
| Video Latency | - ~300ms |
| Wireless Connection | - OFDM with MIMO technology |
| Frequency | - 4.9 – 5.9GHz (configured by software to comply with different countries spectrum requirements) |
| Range | - 250 feet (70m) indoor through walls - 650 feet (200m) open space |
| Security | - 128-bit AES encrypted - User controlled pairing |
| IR Blaster | - Built-in IR receiver with IR extender |
| Control I/O | - RS-232 |
| Antenna | - 3 U.FL TX/RX antenna ports |
| Power Supply | - DC 5V 2A |
| PCB Dimension | - 14 cm x 13 cm |